



Moving Type Single Cable Trolley -  
Cable Carrier Length 75 MM

**Drg. No. AI/D/01**



Fixed Type Single Cable Trolley -  
Cable Carrier Length 75 MM

**Drg. No. AI/D/02**



Moving Type Multi Cable Trolley -  
Cable Carrier Length 150 MM

**Drg. No. AI/D/03**



Fixed Type Multi Cable Trolley -  
Cable Carrier Length 150 MM

**Drg. No. AI/D/04**





Moving Type Multi Cable Trolley -  
Cable Carrier Length 150 MM  
(Both Side Cable Clamping Channel)

**Drg. No. AI/D/21**



Fixed Type Multi Cable Trolley -  
Cable Carrier Length 150 MM  
(Both Side Cable Clamping Channel)

**Drg. No. AI/D/23**



Moving Type Multi Cable Trolley -  
Cable Carrier Length 200 MM  
(Both Side Cable Clamping Channel)

**Drg. No. AI/D/05**



Fixed Type Multi Cable Trolley -  
Cable Carrier Length 200 MM  
(Both Side Cable Clamping Channel)

**Drg. No. AI/D/06**



Moving Type Multi Cable Trolley -  
Cable Carrier Length 240 MM

**Drg. No. AI/D/11**



Fixed Type Multi Cable Trolley -  
Cable Carrier Length 240 MM

**Drg. No. AI/D/12**



Moving Type Multi Cable Trolley -  
Cable Carrier Length 300 MM  
(Both Side Cable Clamping Channel)

**Drg. No. AI/D/15**



Fixed Type Multi Cable Trolley -  
Cable Carrier Length 300 MM  
(Both Side Cable Clamping Channel)

**Drg. No. AI/D/16**

## Moving Type & Fixed Type Double Decker Multi Cable Trolleys

Suitable for I-Beam  
125 MM X 70 MM / 150 MM X 75 MM, ETC.



Moving Type Double Decker  
Multi Cable Trolley -  
Cable Carrier Length 200 MM

**Drg. No. AI/D/07**



Fixed Type Double Decker  
Multi Cable Trolley -  
Cable Carrier Length 200 MM

**Drg. No. AI/D/08**



Moving Type Double Decker Multi Cable  
Trolley - Cable Carrier Length 300 MM  
(Both Side Cable Clamping Channel)

**Drg. No. AI/D/17**



Fixed Type Double Decker Multi Cable  
Trolley - Cable Carrier Length 300 MM  
(Both Side Cable Clamping Channel)

**Drg. No. AI/D/18**



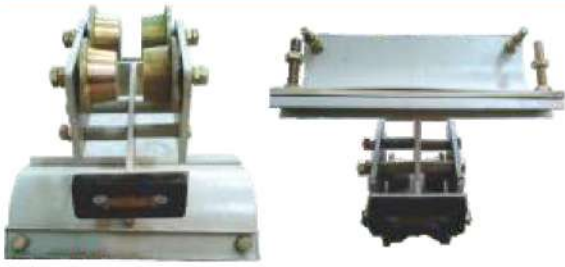
Special Heavy Duty Moving Type Double  
Decker Multi Cable Trolley -  
Cable Carrier Length 200 MM  
(Side Plate Thickness 8 MM, Wheel Dia 75 MM  
& Cable Carrier Thickness 5 MM)

**Drg. No. AI/D/09**



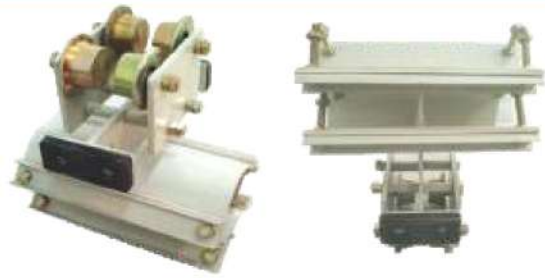
Special Heavy Duty Fixed Type Double  
Decker Multi Cable Trolley -  
Cable Carrier Length 200 MM  
(Side Plate Thickness 8 MM &  
& Cable Carrier Thickness 5 MM)

**Drg. No. AI/D/10**



Special Heavy Duty Moving Type  
Multi Cable Trolley -  
Cable Carrier Length 300 MM  
(Side Plate Thickness 8 MM, Wheel Dia 75 MM &  
Cable Carrier Thickness 3 MM)

**Drg. No. AI/D/49**



Special Heavy Duty Moving Type  
Double Decker Multi Cable Trolley -  
Cable Carrier Length 300 MM  
(Side Plate Thickness 8 MM, Wheel Dia 75 MM &  
Cable Carrier Thickness 3 MM)

**Drg. No. AI/D/19**

## SPRING BUFFERS



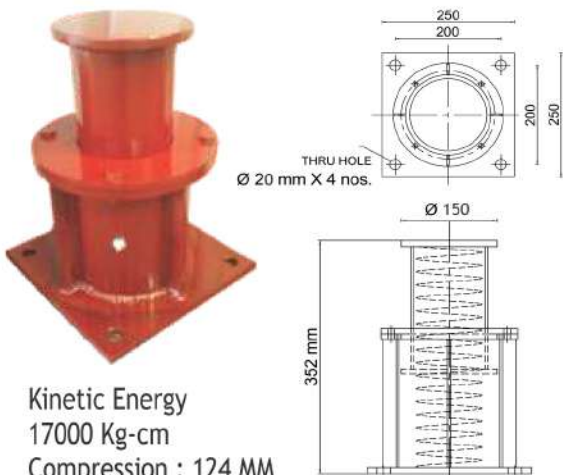
Kinetic Energy  
1400 Kg-cm  
Compression : 106 MM

**Drg. No. AI/D/33**



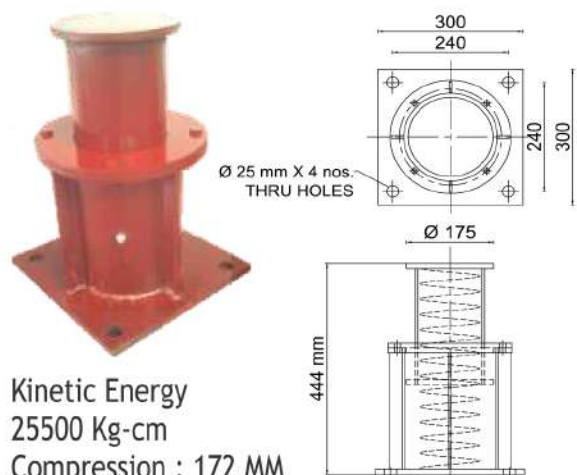
Kinetic Energy  
3900 Kg-cm  
Compression : 120 MM

**Drg. No. AI/D/34**



Kinetic Energy  
17000 Kg-cm  
Compression : 124 MM

**Drg. No. AI/D/35**



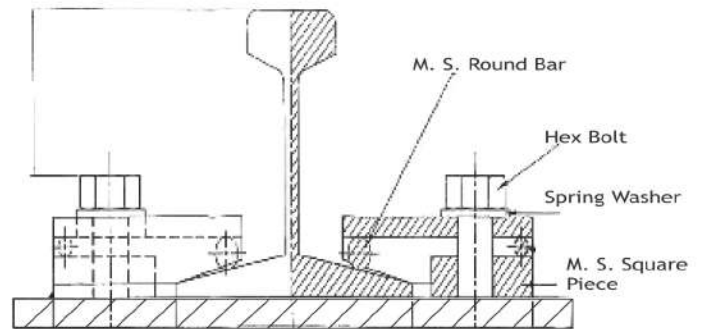
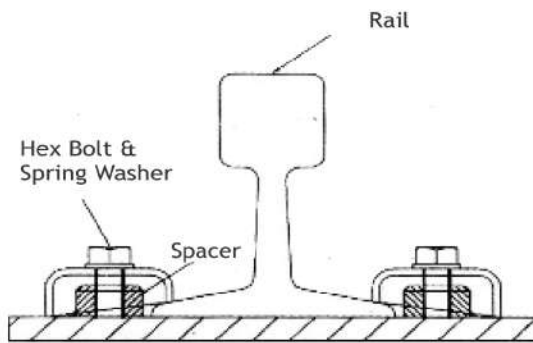
Kinetic Energy  
25500 Kg-cm  
Compression : 172 MM

**Drg. No. AI/D/36**



# RAIL CLAMP

## Cup Type Rail Clamp



## Technical Specification

Rail Clamp	Bolt	No. of Bolt	Drawing No.
Flat Type Rail Clamp 60 LBS	M 16 X 25	1 No.	Drg. No. AI/D/24
Flat Type Rail Clamp 90 LBS	M 16 X 30	1 No.	Drg. No. AI/D/25
Flat Type Rail Clamp 120 LBS	M 20 X 35	1 No.	Drg. No. AI/D/26
Cup Type Rail Clamp 60 LBS	M 20 X 35	1 No.	Drg. No. AI/D/29
Cup Type Rail Clamp 90 LBS	M 20 X 35	1 No.	Drg. No. AI/D/31
CR 80 Double Bolt Rail Clamp	M 20 X 35	2 No.	Drg. No. AI/D/32
CR 80 Single Bolt Rail Clamp	M 16 X 35	1 No.	Drg. No. AI/D/25 (A)
CR 80 Single Bolt Rail Clamp	M 20 X 35	1 No.	Drg. No. AI/D/25 (B)
CR 80 Double Bolt Rail Clamp	M 16 X 35	2 No.	Drg. No. AI/D/30 (A)
CR 80 Double Bolt Rail Clamp	M 20 X 35	2 No.	Drg. No. AI/D/30 (B)
CR 80 Double Double Bolt Rail Clamp	M 16 X 35	2 No.	Drg. No. AI/D/32 (A)



**Rail Clamp 60 Lbs (M 16 Bolt)**  
Drg. No. AI/D/24



**Rail Clamp 90 Lbs (M 16 Bolt)**  
Drg. No. AI/D/25



**Rail Clamp 120 Lbs (M 20 Bolt)**  
Drg. No. AI/D/26



**Cup Type Rail Clamp with Square Block (M 20 Bolt)**

Drg. No. AI/D/27/28



**Cup Type Rail Clamp with Round Spacer (M 20 Bolt)**

Drg. No. AI/D/29/31



CR 80 Single Bolt Rail Clamp  
(M 16 Bolt)  
(Square Block 20 MM Thickness)  
**Drg. No. AI/D/25 (A)**



CR 80 Single Bolt Rail Clamp  
(M 20 Bolt)  
(Square Block 20 MM Thickness)  
**Drg. No. AI/D/25 (B)**



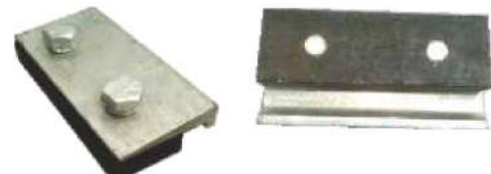
CR 80 Plate Type  
Double Bolt Rail Clamp (M 16 Bolt)  
(Square Block 20 MM Thickness)  
**Drg. No. AI/D/30 (A)**



CR 80 Plate Type  
Double Bolt Rail Clamp (M 20 Bolt)  
(Square Block 20 MM Thickness)  
**Drg. No. AI/D/30 (B)**



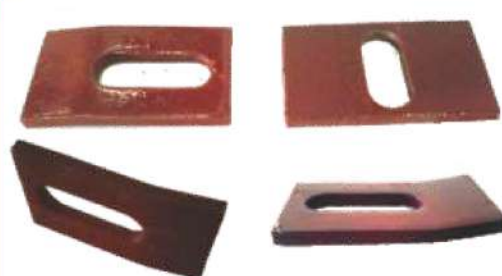
Heavy Duty Double Bolt Rail Clamp  
Suitable for CR 80/CR 100 / CR 120 (M 20 Bolt)  
(Square Block 20 MM Thickness)  
**Drg. No. AI/D/32**



CR 80 Angle Type  
Double Bolt Rail Clamp (M 16 Bolt)  
(Square Block 20 MM Thickness)  
**Drg. No. AI/D/32 (A)**



CR 80 Machined Type Double Bolt  
Rail Clamp (M 20 Bolt)  
(Square Block 20 MM Thickness)  
**Drg. No. AI/D/32 (C)**



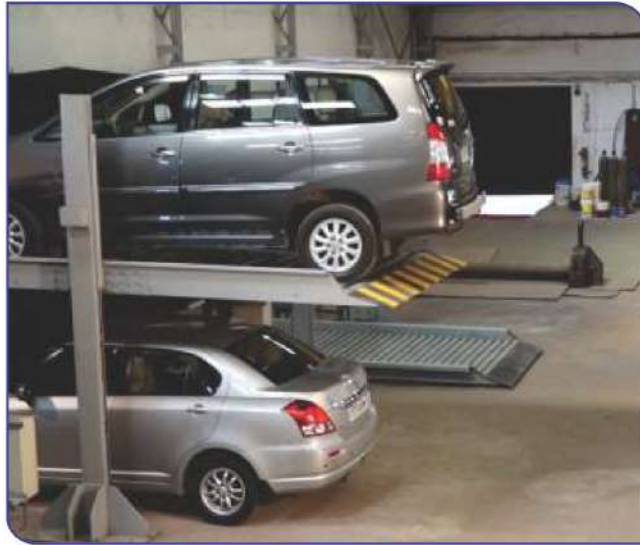
Slot Type Rail Clamp  
**Drg. No. AI/D/32 (D)**

## STACK PARKING

### 4 Leg Mechanical and 2 Leg Hydraulic Car Stack Parking System :



4 Leg Mechanical Car Stack Parking System



2 Leg Hydraulic Car Stack Parking System :

### Puzzle Type Car Parking System :





**We also do trading of following items**

- MS Bright Square Bar      ● MS Bright Round Bar      ● MS Bright Rectangular Bar
- MS Square Pipe          ● MS Rectangular Bar      ● MS Rectangular Pipe
- Channel   ● Angle   ● Square Bar   ● I-Beam   ● MS Plate   ● MS Flat   ● MS Round



**Wire Ropes**



3- Strand Ropes



Combination Fishing Ropes



Nylon Ropes



PP Ropes



Elevator Rope



Fishing Wire Rope



Lashing Wire Rope



PVC Coated Wire Rope



Stainless Steel 304 Wire Rope



Wire Rope Lubricants



Ratchet Buckle



Alloy Steel Ring



Round Slings



Nylon Slings



Magnetic Lifters



Permanent Magnetic Lifters



**Helical  
Gear Box**

**Rail Fish Plates:**

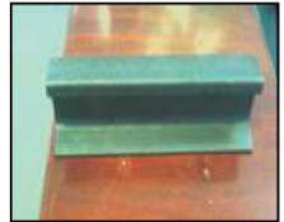


**Sizes :**

**60 LBS / 90 LBS / 105 LBS /  
120 LBS / CR 80, ETC**



**EOT Crane Rail: ( Used / New)**



**New Rail Size :**

**30 LBS / 40 LBS / 60 LBS / 90 LBS / 120 LBS CR 80 / CR 100 / CR 120, ETC**

**Used Rail Size :**

**40 LBS / 50 LBS / 60 LBS / 90 LBS, ETC**

**Material Handling Equipments**



**Crane Block**



**Crane wheel**



**Hydraulic Pallet Truck**



**Hydraulic Stacker**



**End Carriage**



**Short Lift Screw Jack**



**Manual Crab Winches**



**Wedge Socket**



## PUSH PULL TYPE PLAIN TROLLEY



Push Pull Type Plain Trolley 0.5 Ton

CAPACITY (TON)	I - Beam (mm)	Weight in Kg.
0.5	75 - 125	5
1	75 - 125	8
2	100 - 150	13
3	125 - 175	24



Push Pull Type Plain Trolley 1 Ton



Push Pull Type Plain Trolley 2 Ton

## PUSH PULL TYPE GEARED TROLLEY

CAPACITY (TON)	I - Beam (mm)	Lift Height Standard	Wt. in Kg.
1	75 - 125	3 Mtr.	15
2	100 - 150	3 Mtr.	18
3	100 - 150	3 Mtr.	35
5	125 - 175	3 Mtr.	54
10	150 - 225	3 Mtr.	100

\*Note : Lift Height Depend on Customer Requirement.



Push Pull Type Geared Trolley 1 Ton



Push Pull Type Geared Trolley 2 Ton

## CHAIN PULLY BLOCK



CAPACITY (TON)	Chain Dia.	Lift Height Standard
1	6 mm	3 Mtr.
2	8 mm	3 Mtr.
3	8 mm	3 Mtr.
5	10 mm	3 Mtr.
10	10 mm	3 Mtr.

\*Note : Lift Height Depend on Customer Requirement.

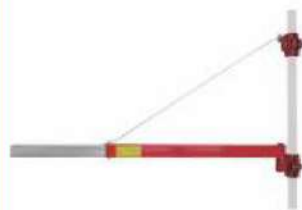
## ELECTRIC WIRE ROPE HOIST



CAPACITY (TON)
0.5
1
2
3
5
10



MINI ELECTRIC HOIST



ROTARY HOIST FRAME



MINI ELECTRIC HOIST AND ELECTRIC TROLLEY



ELECTRIC CHAIN HOIST WITH MOTOR TROLLEY



MOTORISED WINCH



CHAIN BLOCK



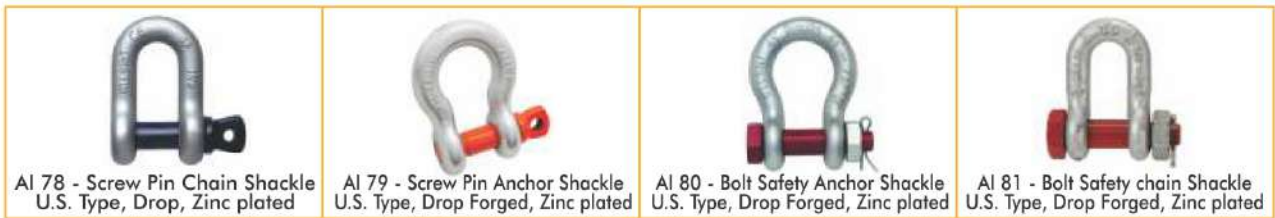
RATCHET LEVER HOIST



GEARED TROLLEY

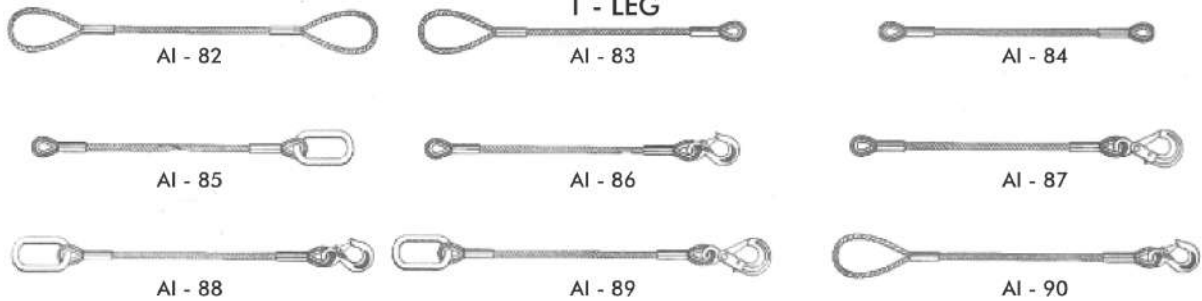


 AI 27 Anchor shackle	 AI 28 Kenter shackle	 AI 29 Swivel Assembly	 AI 30 Anchor	 AI 31 Cargo Block	 AI 32 Cargo Block
 AI 33 Cargo Block	 AI 34 Snatch Block	 AI 35 Champion Block	 AI 36 Champion Block	 AI 37 Wooden Pulley Block	 AI 38 Wooden Pulley Block
 AI 39 Manila Rope Pulley Block	 AI 40 Manila Rope Pulley Block	 AI 41 Wire Rope Pulley Block	 AI 42 Casting Pulley Block	 AI 43 Life Saving Appliances	 AI 44 Hand Winch
 AI 45 Lashing Belt	 AI 46 Hydraulic Jack	 AI 47 Wire Rope Clip	 AI 48 Thimble	 AI 49 Eye Bolt	 AI 50 Snap Hook
 AI 51 Load Binder	 AI 52 Load Binder	 AI 53 Open Socket	 AI 54 Closed Socket	 AI 55 Turn Buckle	 AI 56 Straining Screw
 AI 57 Turn Buckle	 AI 58 Bottle Screw	 AI 58 Eye Hook	 AI 59 Clevis Slip Hook	 AI 60 Clevis Grab Hook	 AI 61 Shank Hook
 AI 62 S- Hook	 AI 63 Lashing Hook	 AI 64 Chain Pulley Block hook	 AI 65 Barrel Hook	 AI 66 Swivel Hook	 AI 67 Pipe Hook

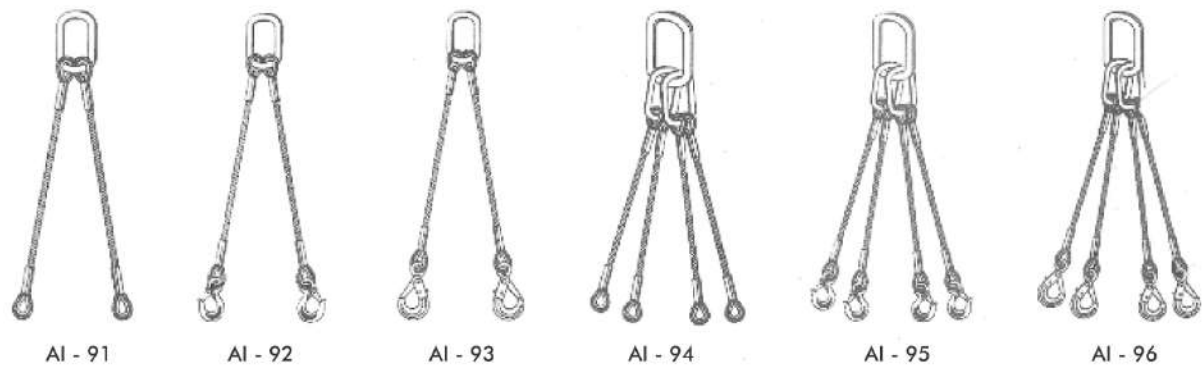


### WIRE ROPE SLINGS

#### 1 - LEG

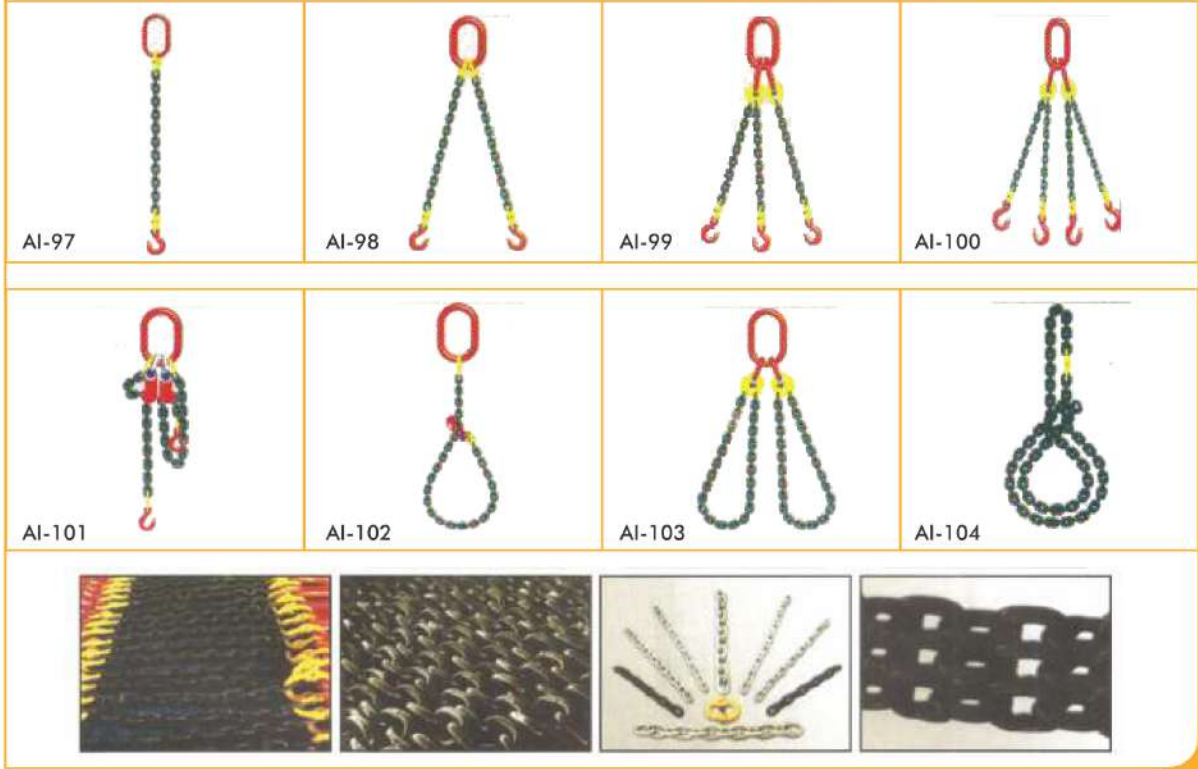


#### 2 - LEG

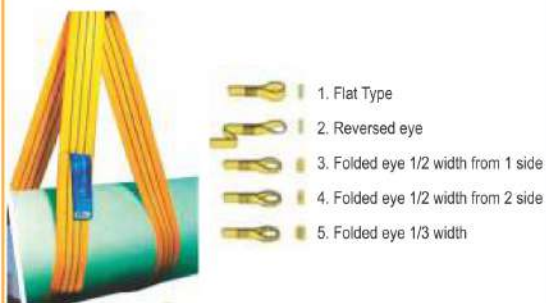




## CHAIN SLING



### DUPLEX WEB SLING WITH LOOPS



### WIRE ROPE LIFTING PULLING MACHINE



### WEB SLING



### BEAM CLAMP



### HORIZONTAL CLAMP



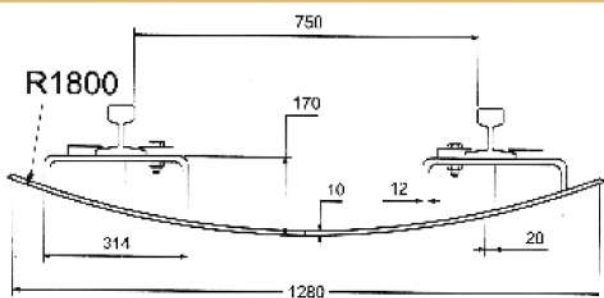
### VERTICAE PLATE CLAMP



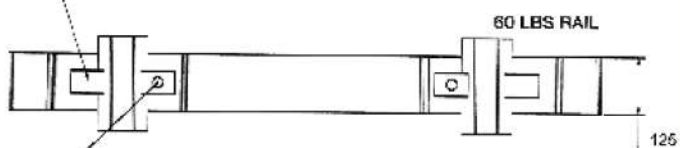
### HORIZONTAL LIFTING CLAMP



**M S CURVED STEEL SLEEPER**

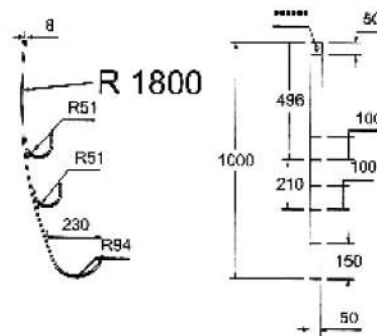


2 NOS CLAMP WELDED ON THE SLEEPER



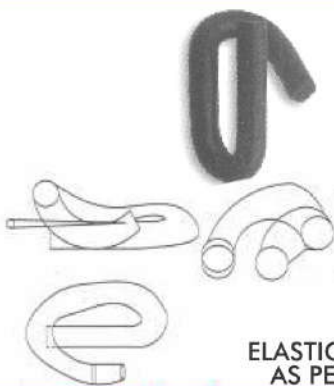
2 NOS CLAMP WITH BOLT & NUTS

**CURVED STEEL SLEEPER FOR USE INSIDE THE TUNNEL**



**PIPE HANGER (8" & 4") TO CARRY AIR PIPE & ELECTRICAL CABLE FOR FIXING INSIDE THE TUNNEL**

**RAILWAY TRACK MATERIALS**

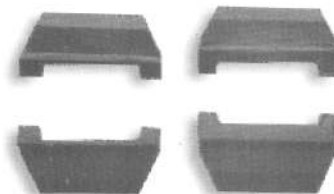
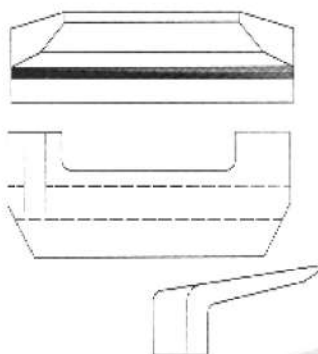


**ELASTIC RAIL CLIP 'J' TYPE  
AS PER RDSO T-4158**



**ERC CLIP  
AS PER RDSO T-3703**

**METAL LINERS**



METAL LINER	DRG. NO.
52 KG RAIL WITH 52 KG SLEEPER	T-3738
60 KG RAIL WITH 60 KG SLEEPER	T-3740
60 KG SLEEPERS WITH 52 KG RAIL	T-3741 & T-3742



## TRACK BOLT & NUT

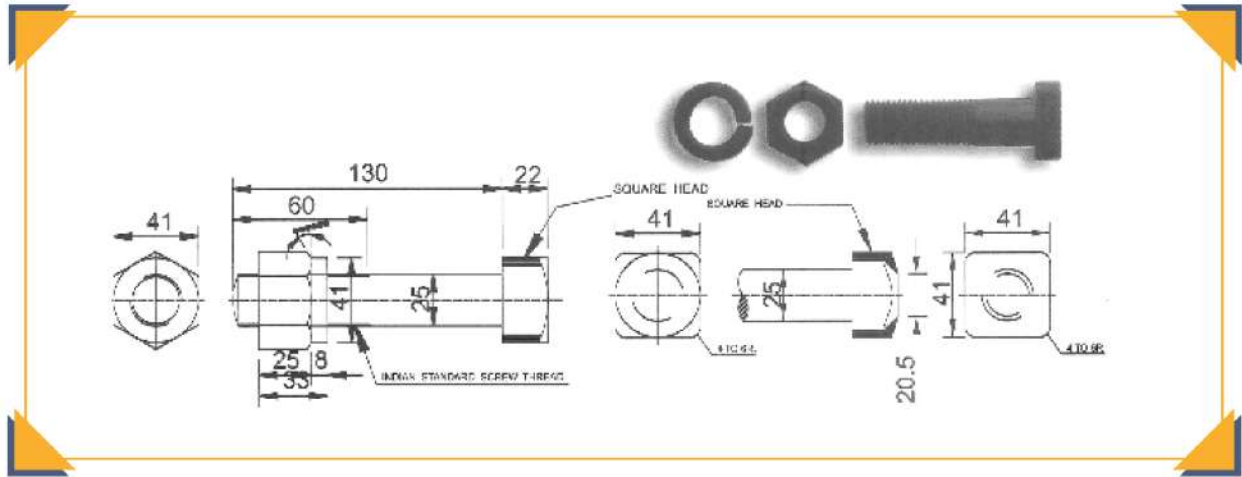


TABLE SHOWING LENGTH & RSDO DRG. NO

FISH BOLTS			TRACK BOLTS			
SIZE	DRG. NO.	USED FOR	SIZE	DRG. NO.	SIZE	DRG. NO.
25 X 130	T-11501	52 KG / 90 R			25 X 360	T - 11531
22 X 105	T-11502	60 R	25 X 100	T - 11505	25 X 370	T - 11532
18 X 90	T-11503	50 R	25 X 110	T - 11506	25 X 380	T - 11533
25 X 140	T-1899	60 KG	25 X 120	T - 11507	25 X 390	T - 11534
			25 X 130	T - 11508	25 X 400	T - 11535
			25 X 140	T - 11509	25 X 410	T - 11536
			25 X 150	T - 11510	25 X 420	T - 11537
			25 X 160	T - 11511	25 X 430	T - 11538
			25 X 170	T - 11512	25 X 440	T - 11539
			25 X 180	T - 11513	25 X 450	T - 11540
			25 X 190	T - 11514	25 X 460	T - 11541
			25 X 200	T - 11515	25 X 470	T - 11542
			25 X 210	T - 11516	25 X 480	T - 11543
			25 X 220	T - 11517	25 X 490	T - 11544
			25 X 230	T - 11518	25 X 500	T - 11545
			25 X 240	T - 11519	25 X 510	T - 11546
			25 X 250	T - 11520	25 X 520	T - 11547
			25 X 260	T - 11521	25 X 530	T - 11548
			25 X 270	T - 11522	25 X 540	T - 11549
			25 X 280	T - 11523	25 X 80	T - 11623 FORSC
			25 X 290	T - 11524	25 X 80	T - 11624 FORSC
			25 X 300	T - 11525	18 X 65	T - 11627 STOP
			25 X 310	T - 11526	18 X 85	T - 11636
			25 X 320	T - 11527	18 X 70	T - 11688
			25 X 330	T - 11528	18 X 80	T - 11689
			25 X 340	T - 11529	18 X 90	T - 11690
			25 X 350	T - 11530	18 X 100	T - 11691

DIFFERENT TYPES OF TROLLEY / RAIL DOLLY

TURNOUT COMPONENTS



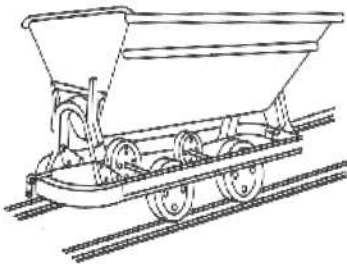
INSPECTION PUSH TROLLEY



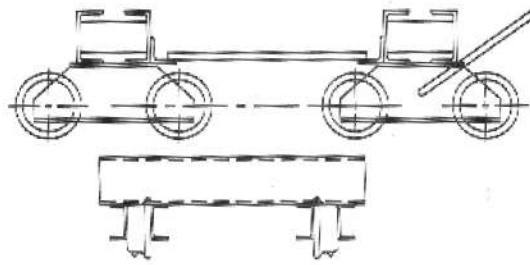
MOTORISED PLATFORM TROLLEY



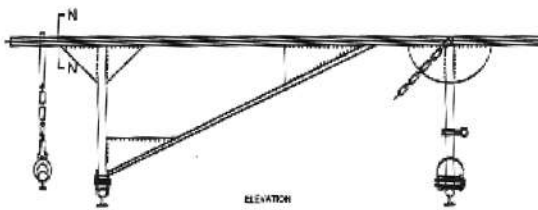
TURNOUT & Y SWITCH



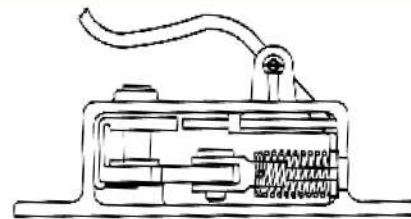
PARRY TYPE TROLLEY



DIP TROLLEY



RAIL TROLLEY



HAND LEVER BOX

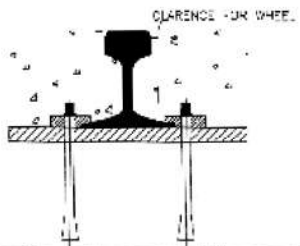
DIFFERENT TYPES OF TROLLEY / RAIL DOLLY



HOOK BOLT

HOOK BOLTS FOR BRIDGE SLEEPERS DRG. NO. BOO3 /M

FOUNDATION BOLT

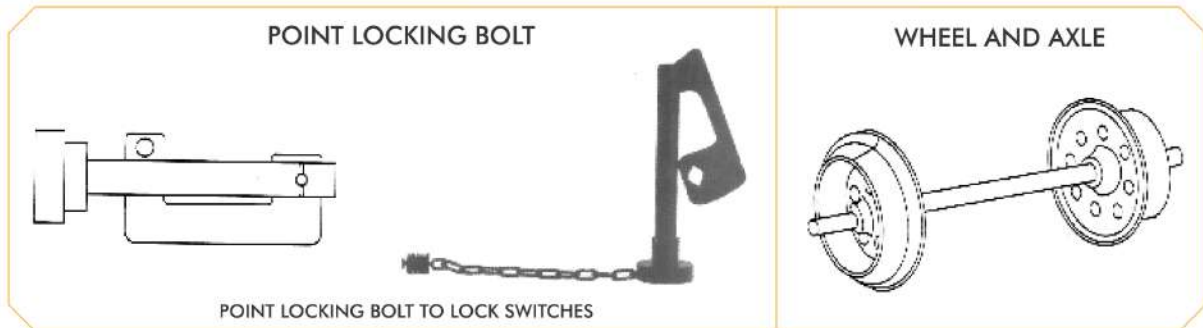


JIM CROW (RAIL BENDER) FOR RAILS





DIFFERENT TYPES OF TROLLEY / RAIL DOLLY



P - WAY TRACK MAINTANANCE TOOLS

